



Efficient 16-Zone Conventional Fire Alarm Panel XHA1016 - AC220V Powered for Enhanced Fire Safety Solutions

Our Product Introduction

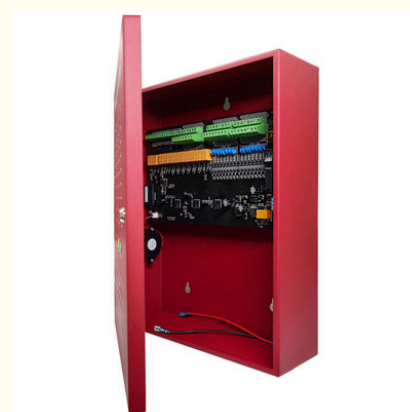
Basic Information

- Place of Origin: China
- Brand Name: XHA
- Certification: CE
- Model Number: XHA1016
- Minimum Order Quantity: 1PCS
- Price: negotiable
- Packaging Details: 370mm*440mm*100mm
- Delivery Time: 3 Working days
- Payment Terms: T/T, Western Union,
- Supply Ability: 500PCS/Month



Product Specification

- Back Up Battery: 1*12V Sealed Lead Acid
- Connected: Wired Conventional 16 Zone Smoke Alarm Panel
- Alarm Current: <150 MA
- Types Of Smoke Detectors: Photoelectric Smoke Detector
- Color: Red
- Capacity: Max 30 Conventional Detectors In One Zone
- Power Supply: 90-270VAC
- Highlight: **AC220V Powered Conventional Fire Alarm Panel**
, 16-Zone Conventional Fire Alarm Panel



More Images



for more products please visit us on xhafiresafety.com

Product Description

AC220V Powered Fire Alarm System 16Zone Conventional Fire Alarm Panel



Introduction

The information provided in this manual covers the Master and Slave fire alarm control panel. The panel range is designed to meet the requirements of EN54 Parts 2 & 4.

A comprehensive range of auxiliary devices is available to operate with the fire control panels including optical, ionization, photoelectric, photoelectric-thermal and heat detectors.

Each of the system components has been specifically designed to operate as part of the system. This provides assurance

that the control panel, smoke detectors, interface devices and the ancillary components are all fully compatible with one

another and that the full range of system functionality is supported by each device.

The fire alarm control panels (8 Zones) provide all of the sophisticated features required of a leading edge conventional fire

alarm system along with the simple operation and efficient installation methods demanded by both installers and building users

Product Features

16 conventional input zones.

Housed in a 370mm W x 440mm H x 100mm D metal enclosure.

Each zone can be connected with 30 conventional fire detectors. Each panel has external devices control output points, Through the points, the panel can control such external devices as bell, siren, flame detector, beam detector etc.

Dedicated alarm and trouble relays.

Enclosure supports 1 12V, 4.5Ah backup batteries.

The panel can be used independently or connect by RS485.

1 RS485 can be able to connect the other panel.

Specification

Primary AC	120VAC 50/60 Hz Power supply rating
	240VAC 50/60 Hz
Power supply rating	2 Amps @ 24VDC
Maximum Battery Charging Current	0.90 Amps @ 26VDC
Initiating Device Circuits Zones	Alarm Zone 2/4/8/16
Normal Initiating Operating Voltage	22VDC, Maximum 26VDC, regulated
Normal Monitor Current	c
Alarm Current	<150 mA
Short Circuit Initiating Current (per zone)	35mA Maximum
Maximum Initiating Resistance (per zone)	10 ohms
Initiating End-of-Line Resistor	4K7 ohms, 1/2W 5%
Standby Detector Current (per zone)	4mA maximum
Maximum Detector Count (per zone)	30 detectors
Initiating Cabling Type	18AWG Twisted Shielded pair (14 – 18 AWG)
Detector Base Impedance	430 ohms
Fault Relay rating	2A & 30VAC, resistive
Alarm(Auxiliary) Relay rating	2A & 30VAC, resistive

Connection Diagram



Service

1. OEM &ODM service.
2. Provide technical support and after-sale service.
3. 1 year warranty.
4. Normally 15 working days lead time.
5. Welcome sample order.



Shenzhen Xinhe'an Technology Co., Ltd.



+8615986702194



Claire.tian@xinheantech.com



xhafiresafety.com

406,Jude Building,Zhengfeng South Road,Fuyong Street,Bao'An District, Shenzhen City, Guangdong Province.
China,518103